

# Romantic Close Up by Sara Moon

☒	DMC 310 Black
◻	DMC 3371 Black Brown
◉	DMC 838 Very Dark Beige Brown
+	DMC 839 Dark Beige Brown
■	DMC 801 Dark Coffee Brown
◡	DMC 3781 Dark Mocha Brown
●	DMC 3011 Dark Khaki Green
⊠	DMC 420 Dark Hazelnut Brown
◊	DMC 3862 Dark Mocha Beige
◼	DMC 832 Golden Olive
◄	DMC 610 Dark Drab Brown
◉	DMC 611 Drab Brown
⊕	DMC 3012 Medium Khaki Green
◻	DMC 370 Medium Mustard
◡	DMC 371 Mustard
↑	DMC 3032 Medium Mocha Brown
△	DMC 3828 Hazelnut Brown
⊠	DMC 372 Light Mustard
◡	DMC 833 Light Golden Olive
⊠	DMC 3046 Medium Yellow Beige
⊥	DMC 3782 Light Mocha Brown
▼	DMC 3013 Light Khaki Green
⊠	DMC 842 Very Light Beige Brown
◼	DMC 453 Light Shell Gray
◄	DMC 3033 Very Light Mocha Brown
◻	DMC 3072 Very Light Beaver Gray

\* To work out the size of the finished article, take the number of stitches and divide it by the count of your fabric (e.g 14,16,18 count aida etc) to get the size in inches. Times it by 2.5 to get centimetres.

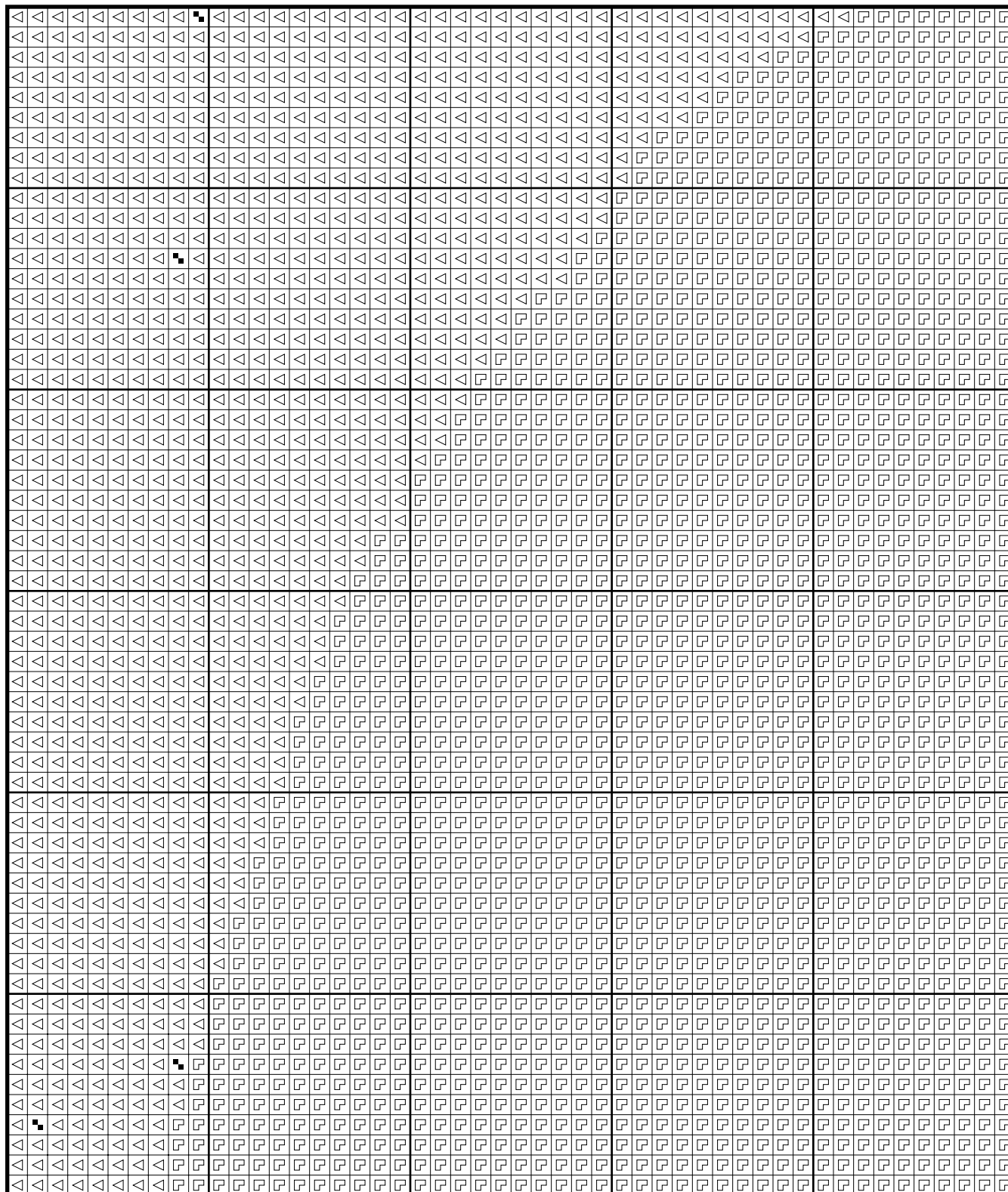
\* PLEASE NOTE: Our patterns are printed in a grid showing 10 x 10 stitches in each box. You may notice that the pages that run vertical have a maximum number of 9 rows at the top or bottom of a page. You are not missing a row or rows of stitches, this is the way our patterns print. It allows us to have larger print for your symbols.

\* You should begin at the centre of the pattern which has been marked by a circle for you. To find the centre of the pattern it is just a matter of counting the vertical and horizontal stitches and divide them by half. Where the two points meet that is the centre.

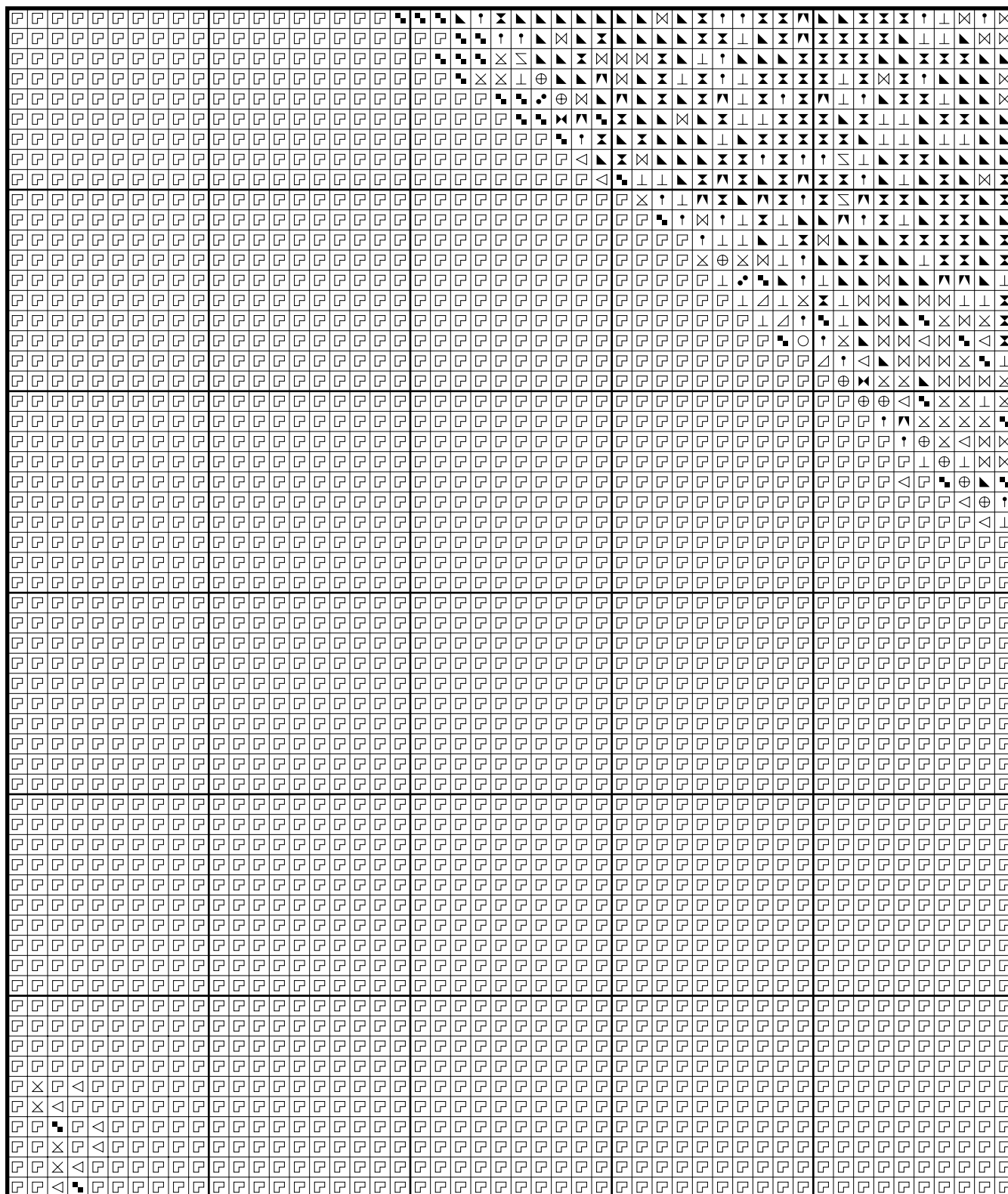
\* Pattern is for personal use only and is not to be sold,copied or redistributed in any form.Copyright of Artecy Cross Stitch. Designed by Artecy Cross Stitch.

\* 230 stitches wide by 216 stitches high, 26 colours used

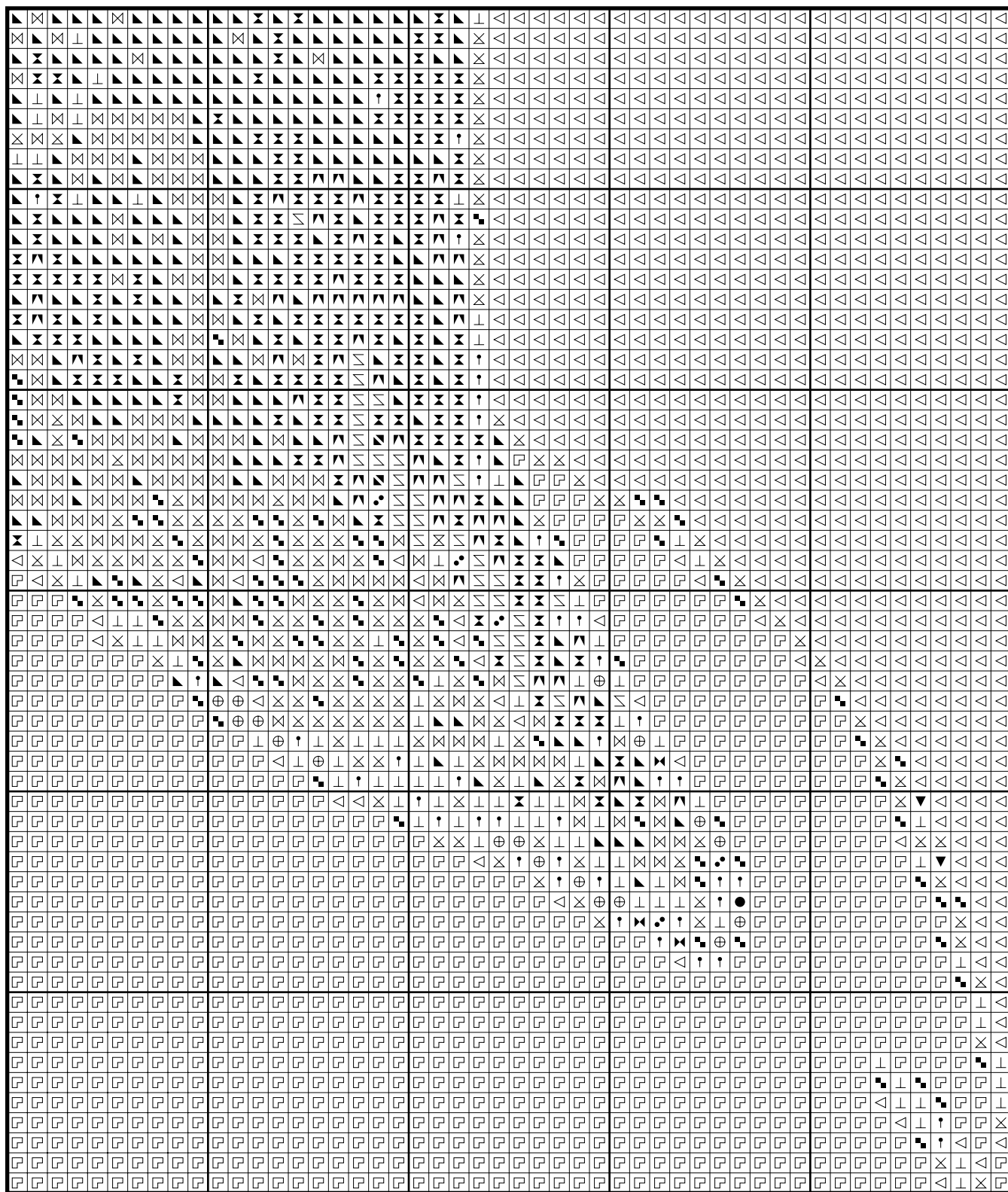
# Romantic Close Up by Sara Moon



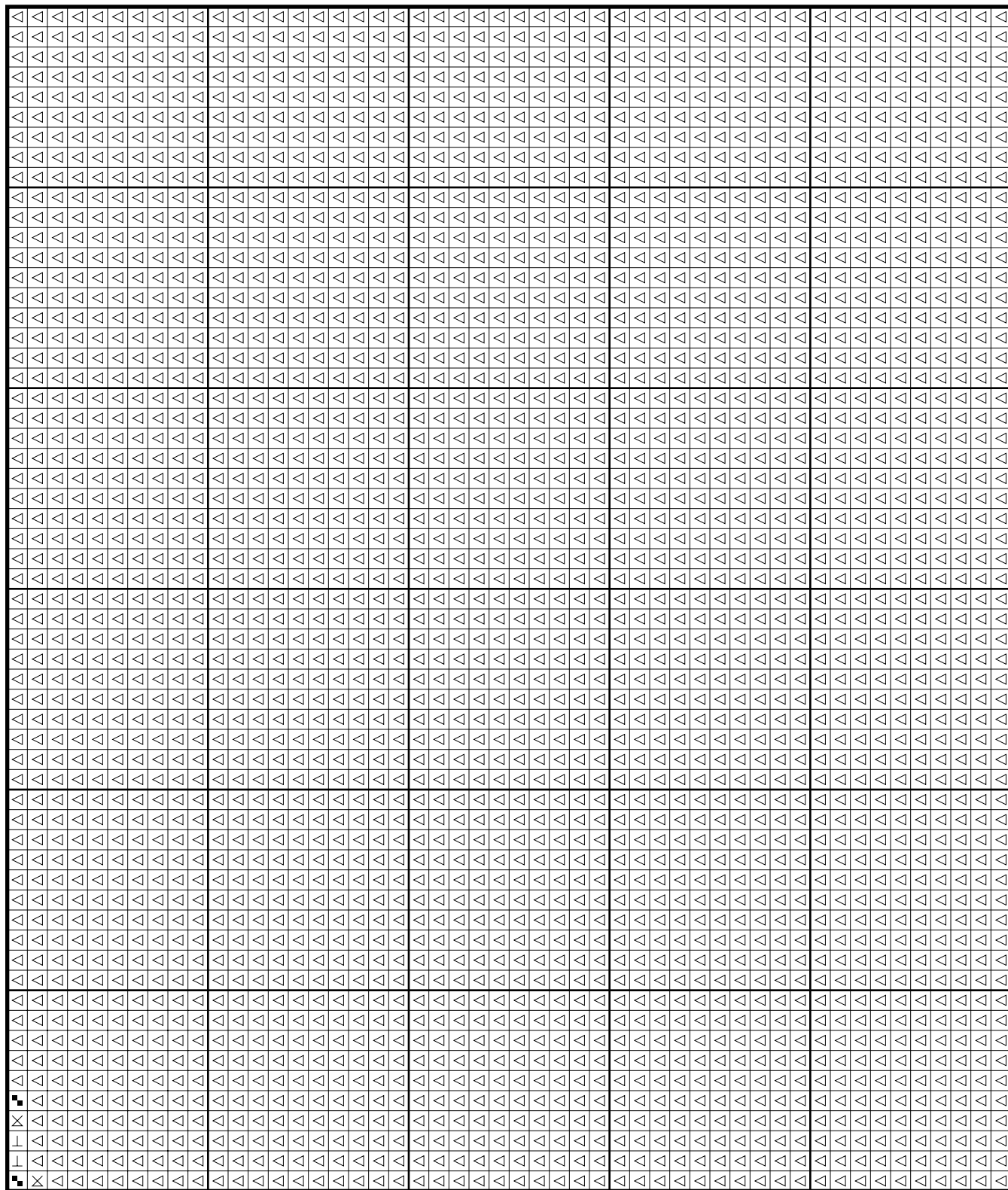
# Romantic Close Up by Sara Moon



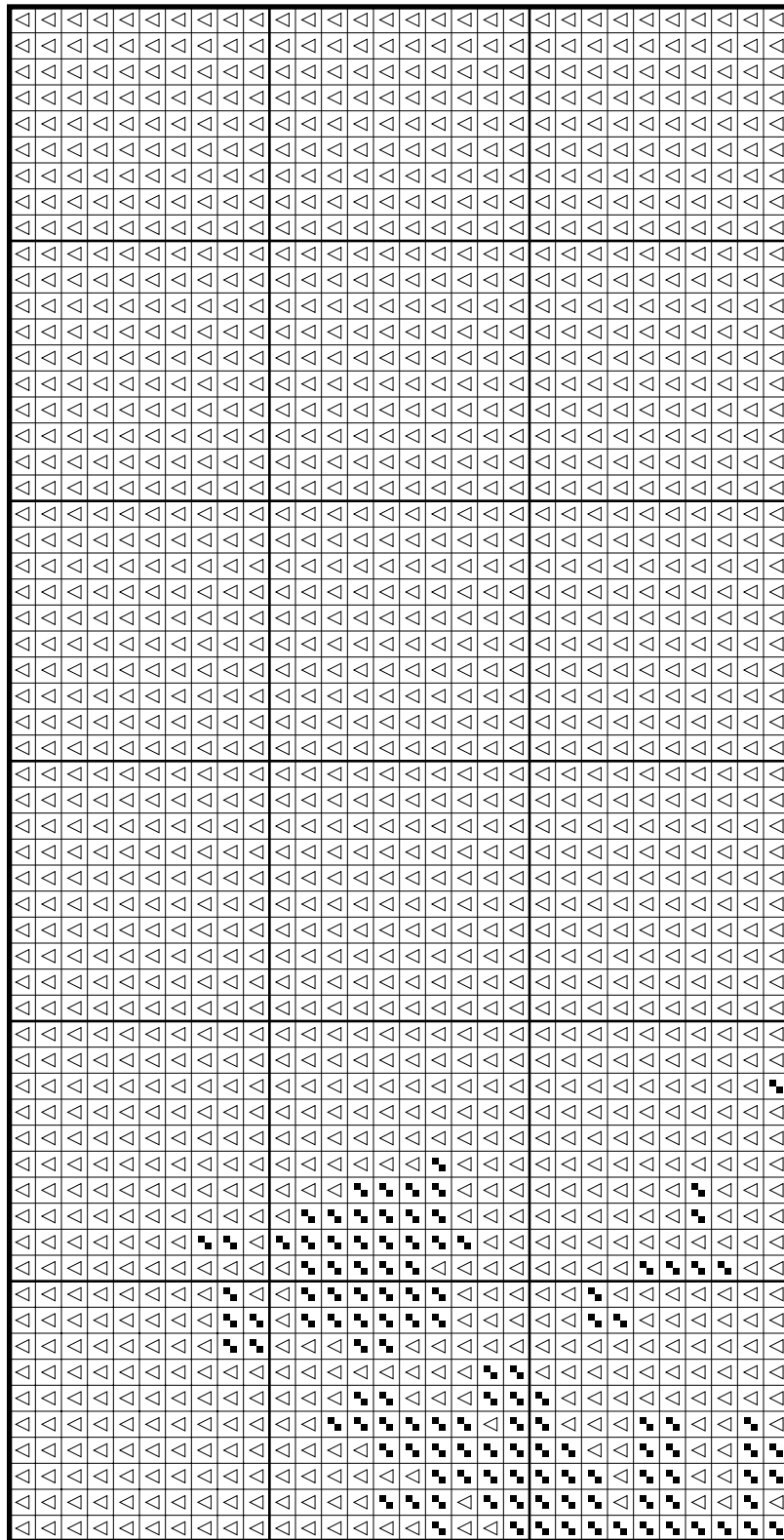
# Romantic Close Up by Sara Moon



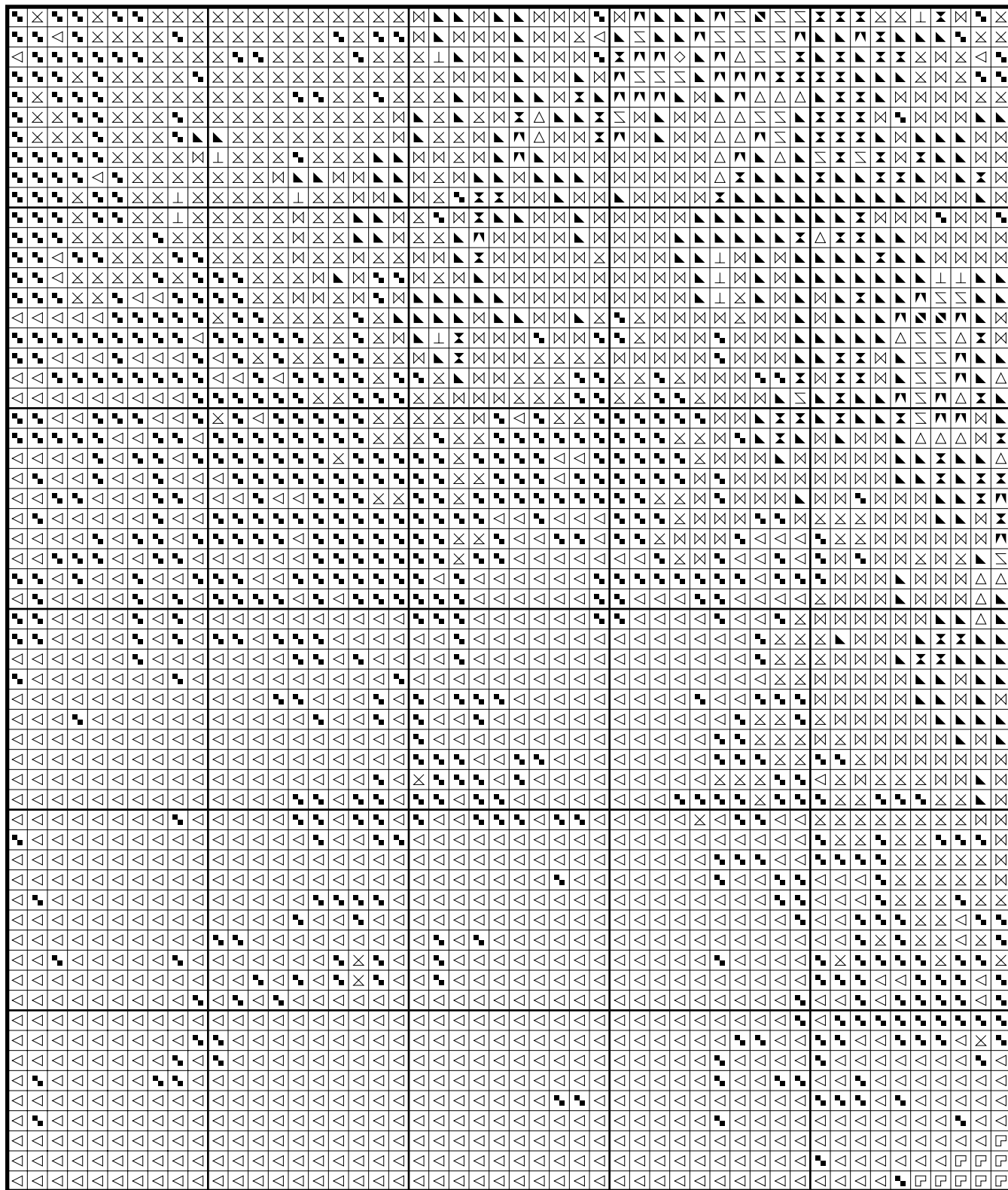
# Romantic Close Up by Sara Moon



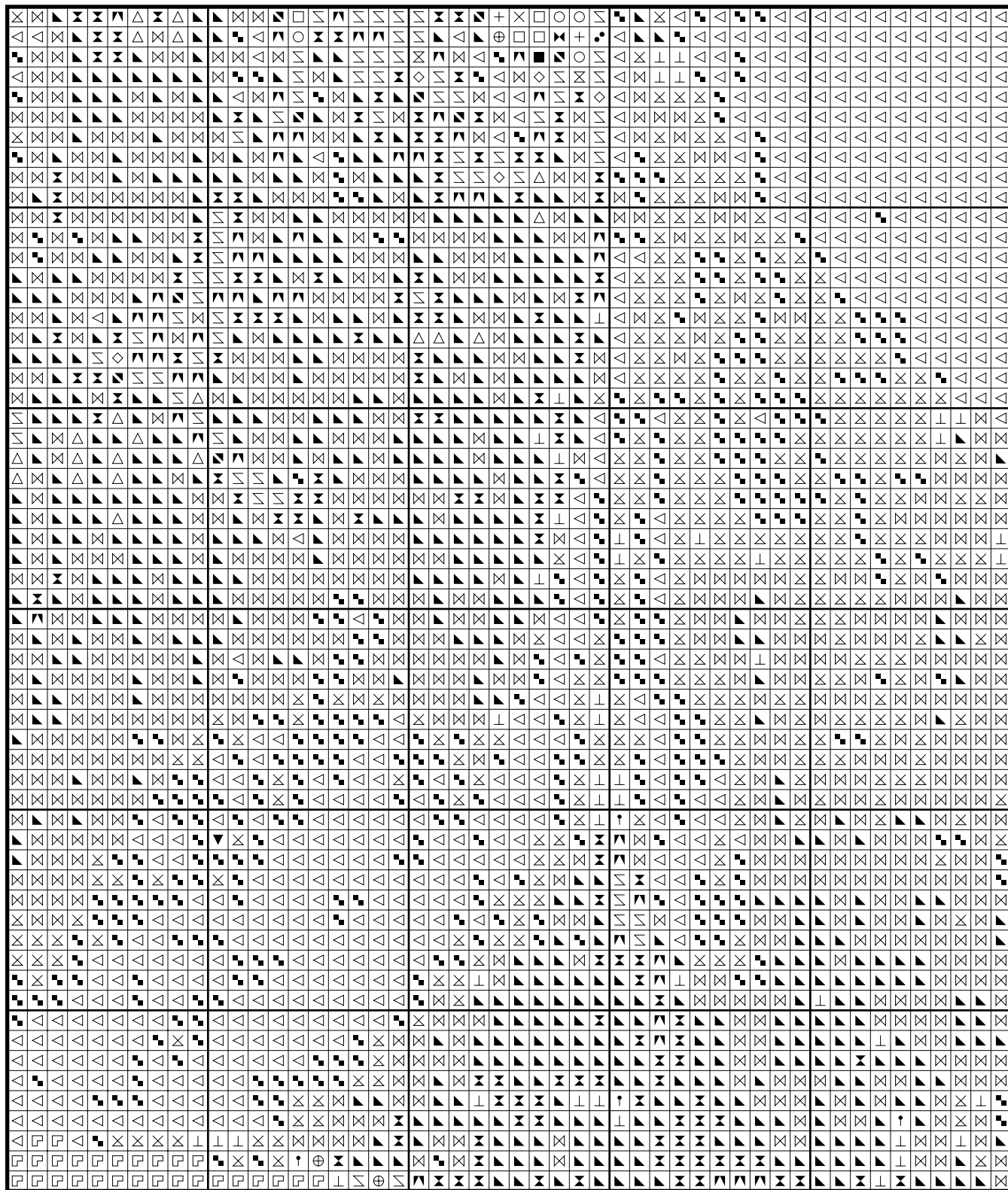
# Romantic Close Up by Sara Moon



# Romantic Close Up by Sara Moon

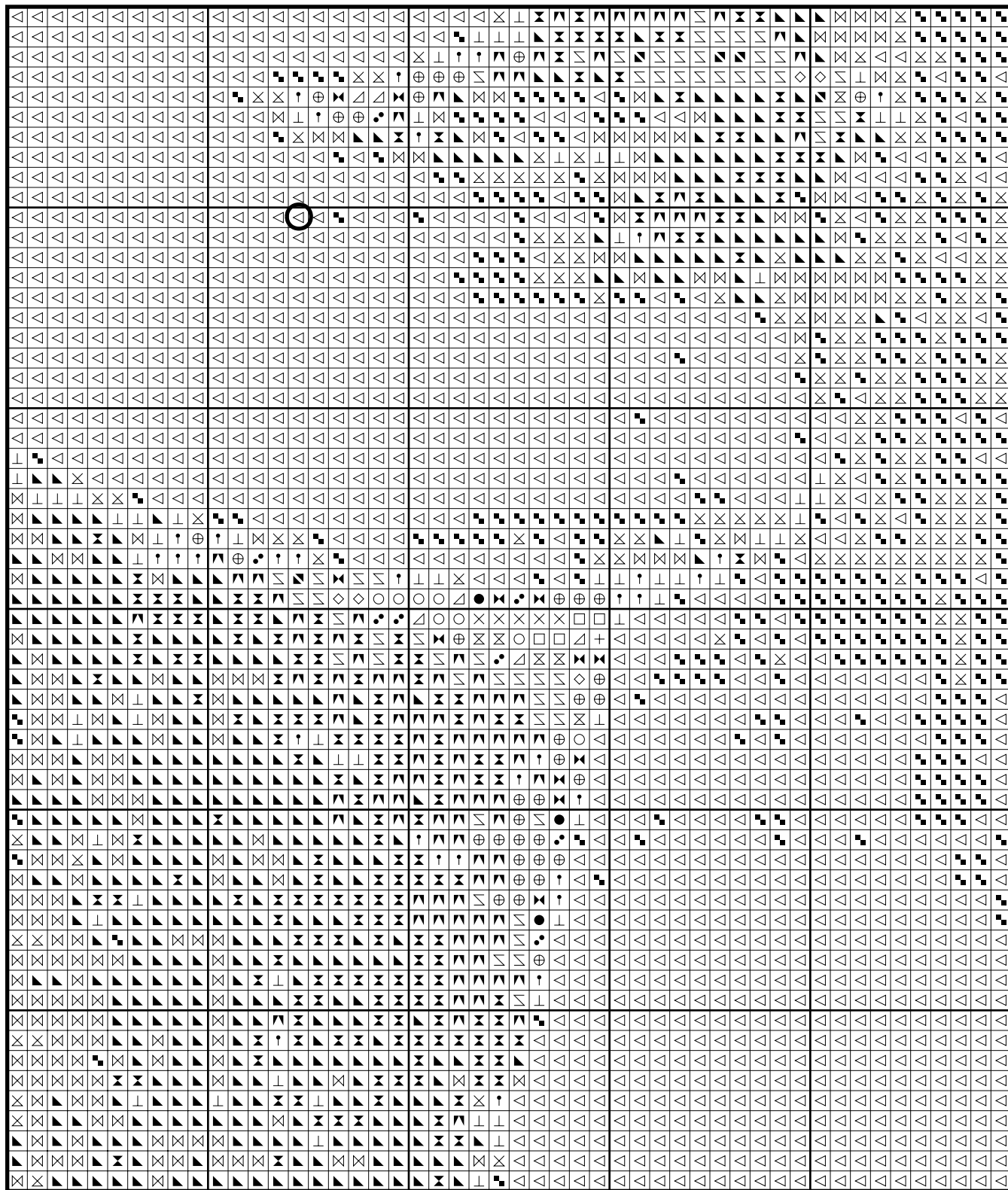


# Romantic Close Up by Sara Moon

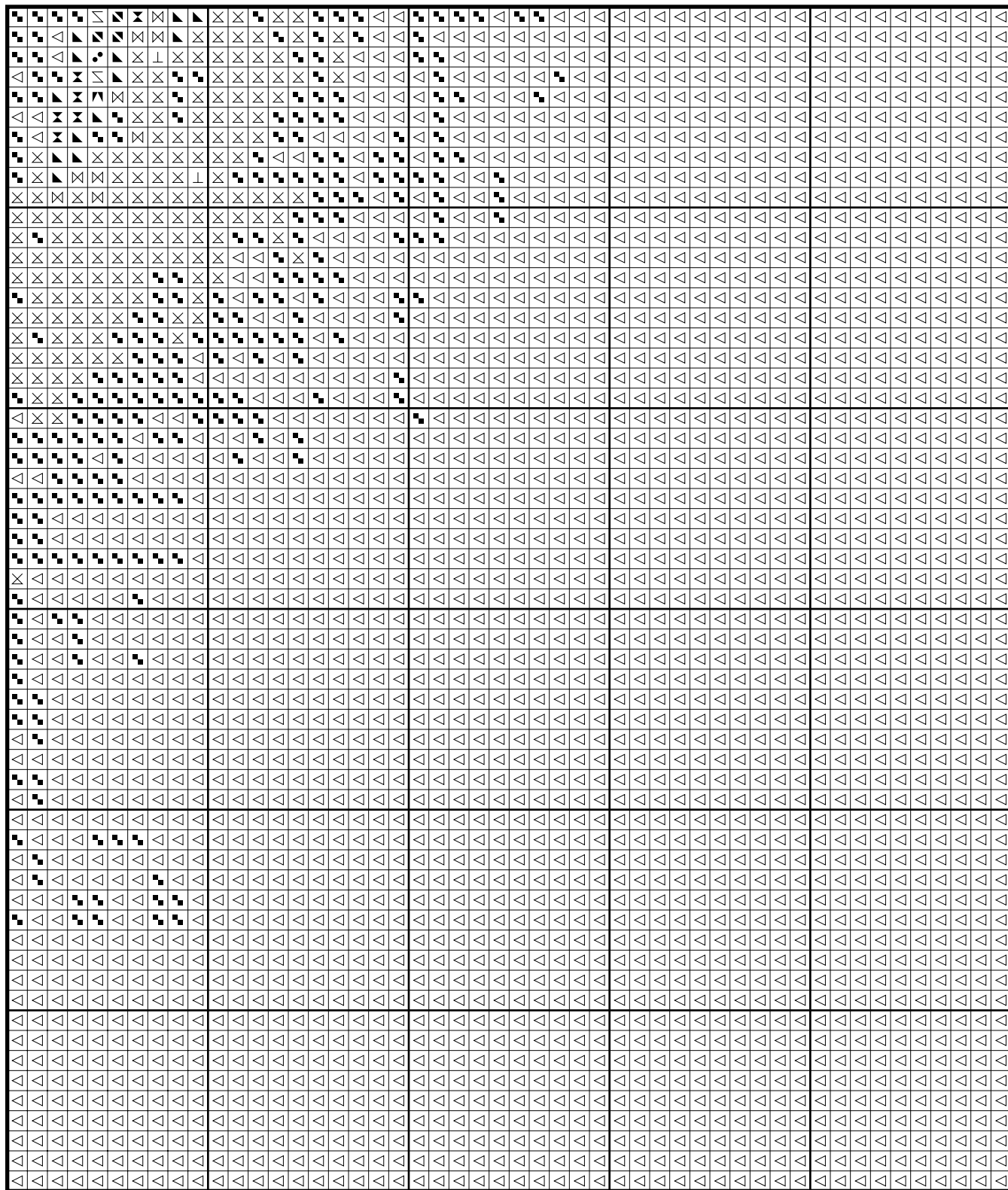




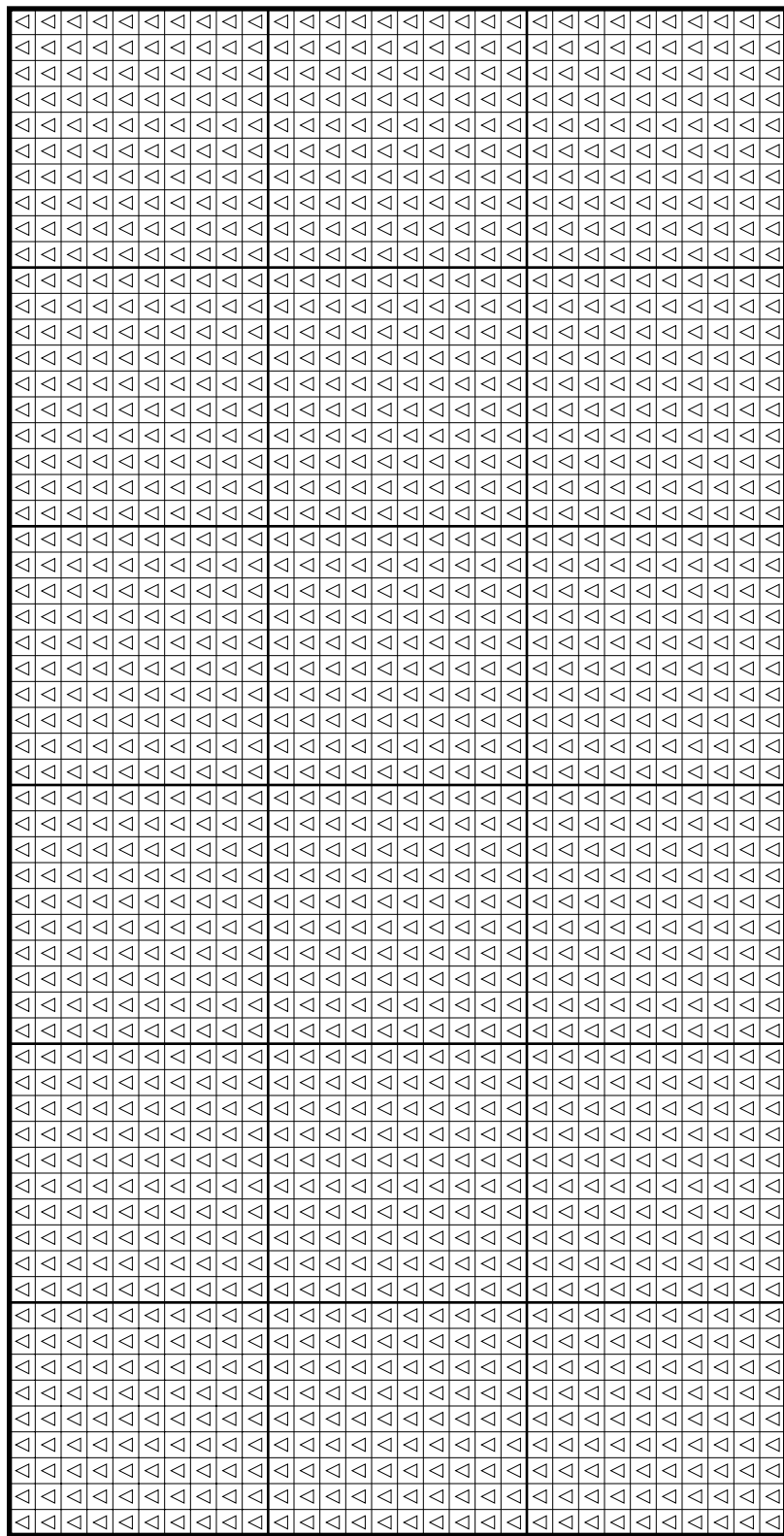
# Romantic Close Up by Sara Moon



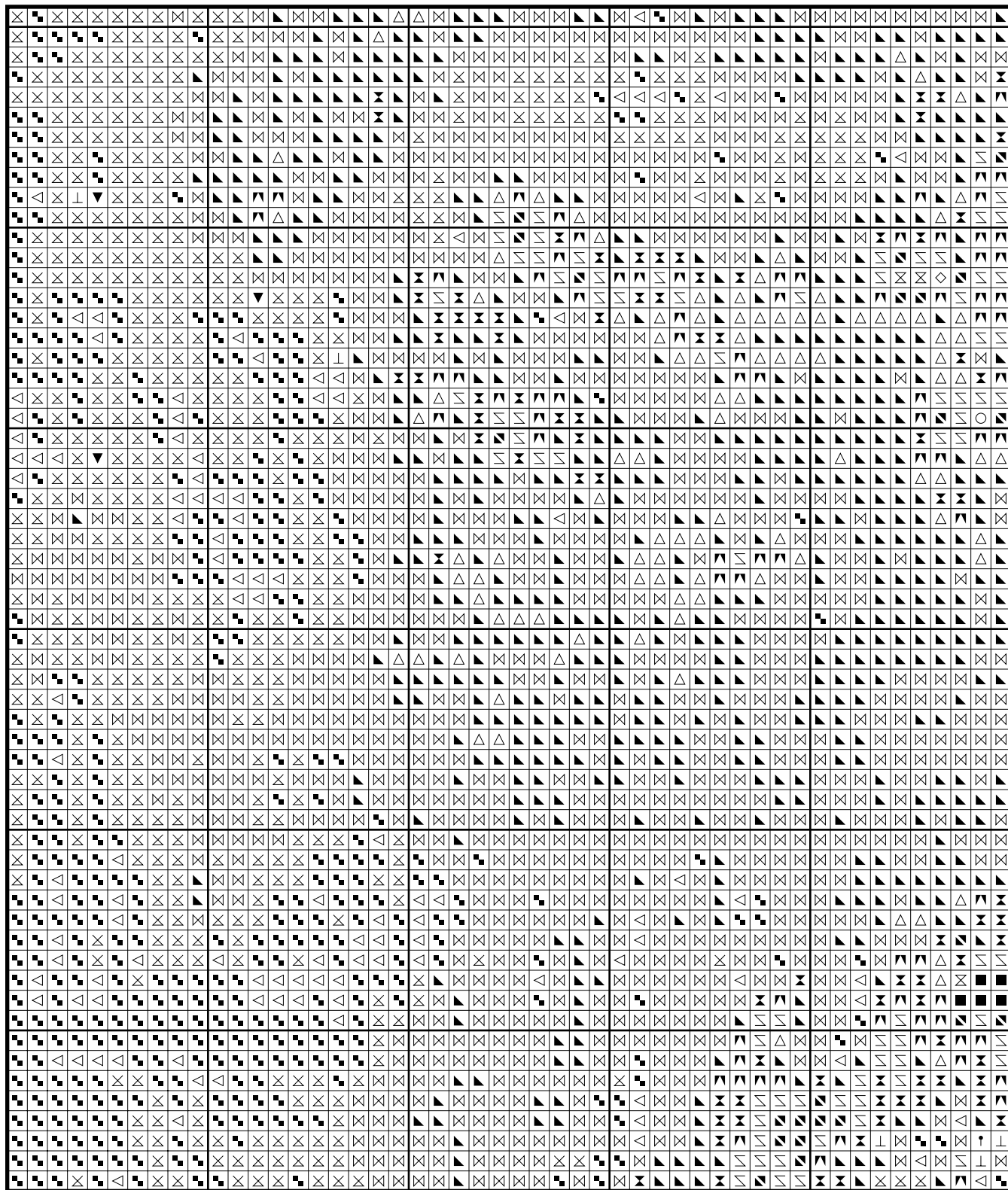
# Romantic Close Up by Sara Moon



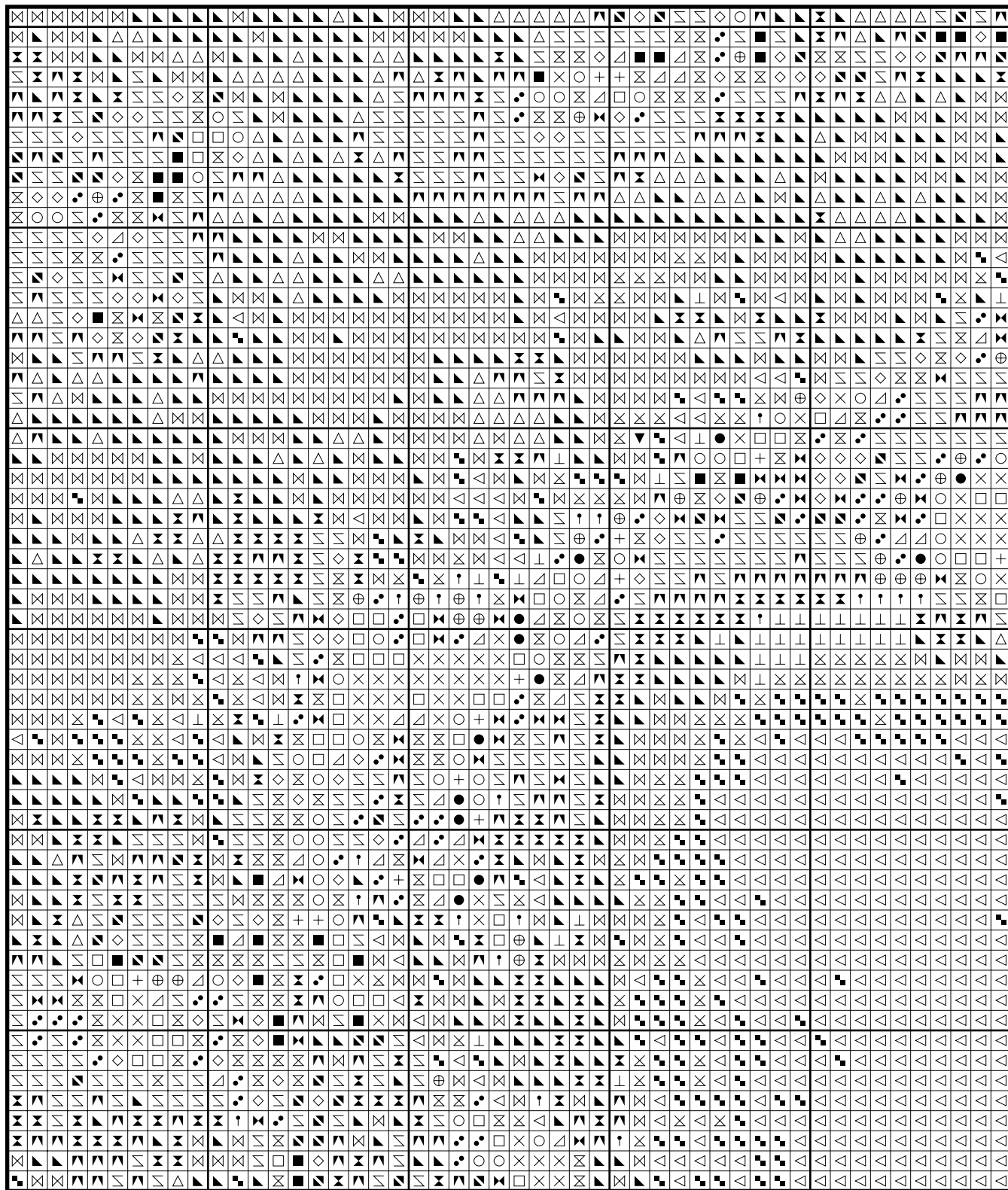
# Romantic Close Up by Sara Moon



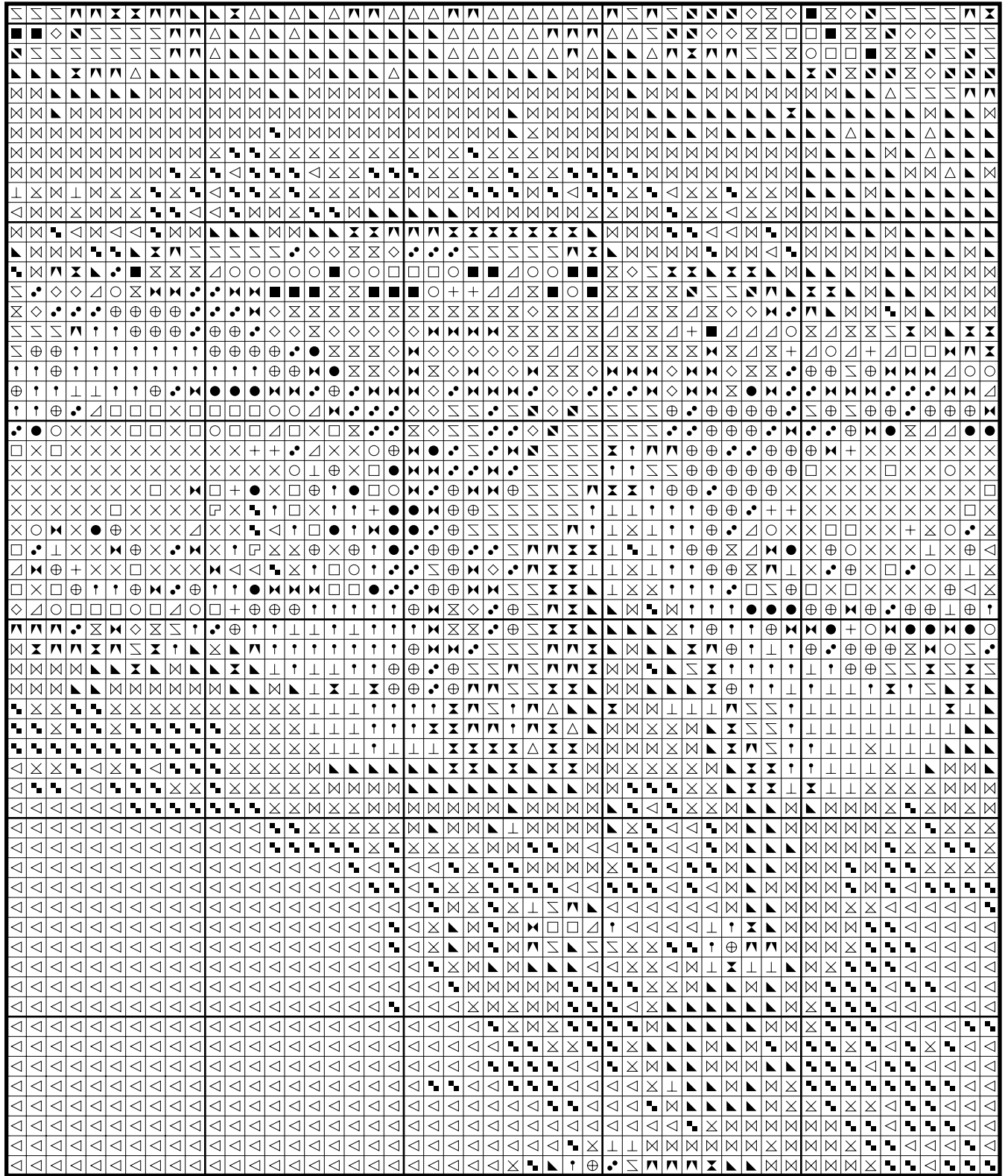
# Romantic Close Up by Sara Moon



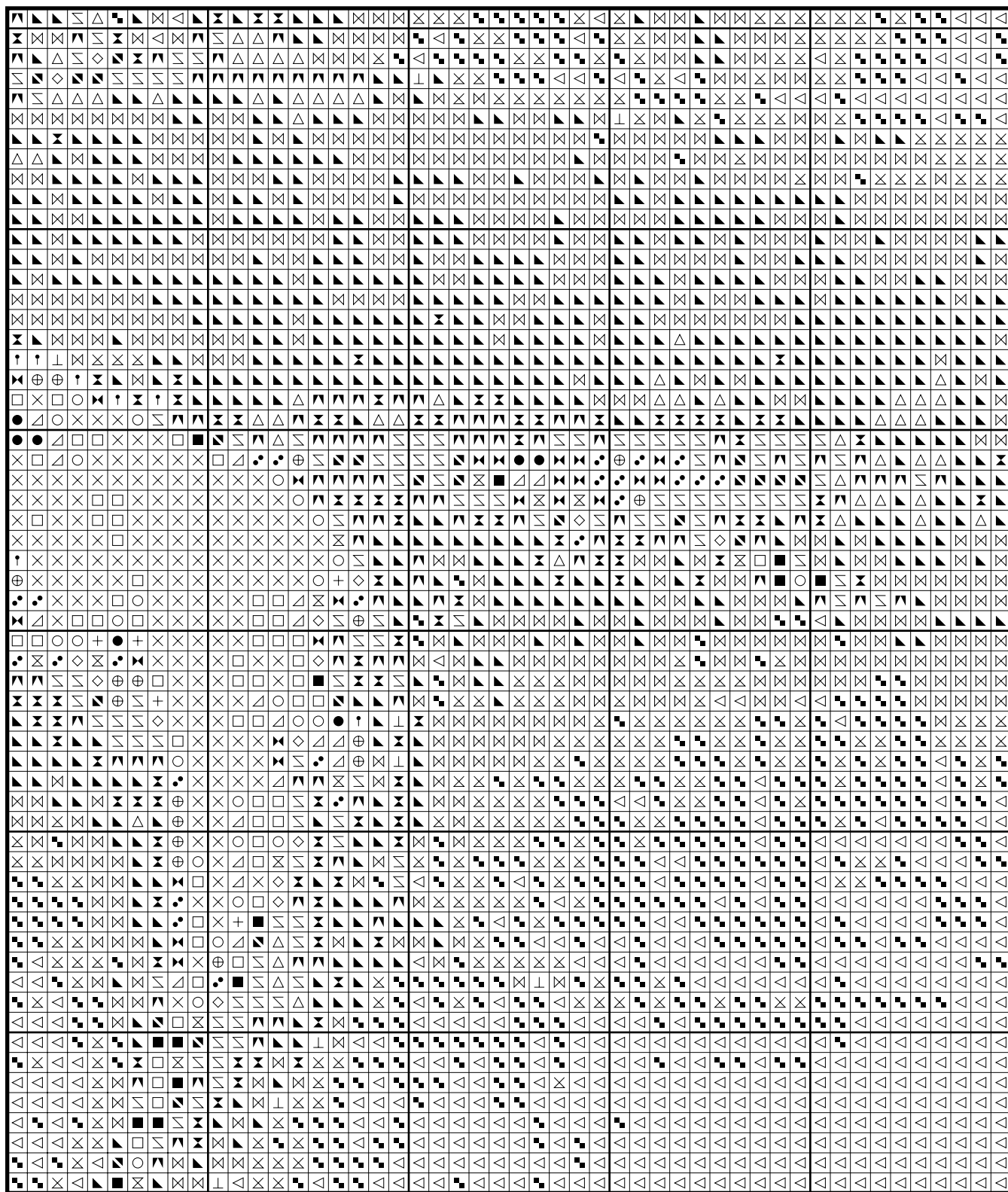
# Romantic Close Up by Sara Moon



# Romantic Close Up by Sara Moon



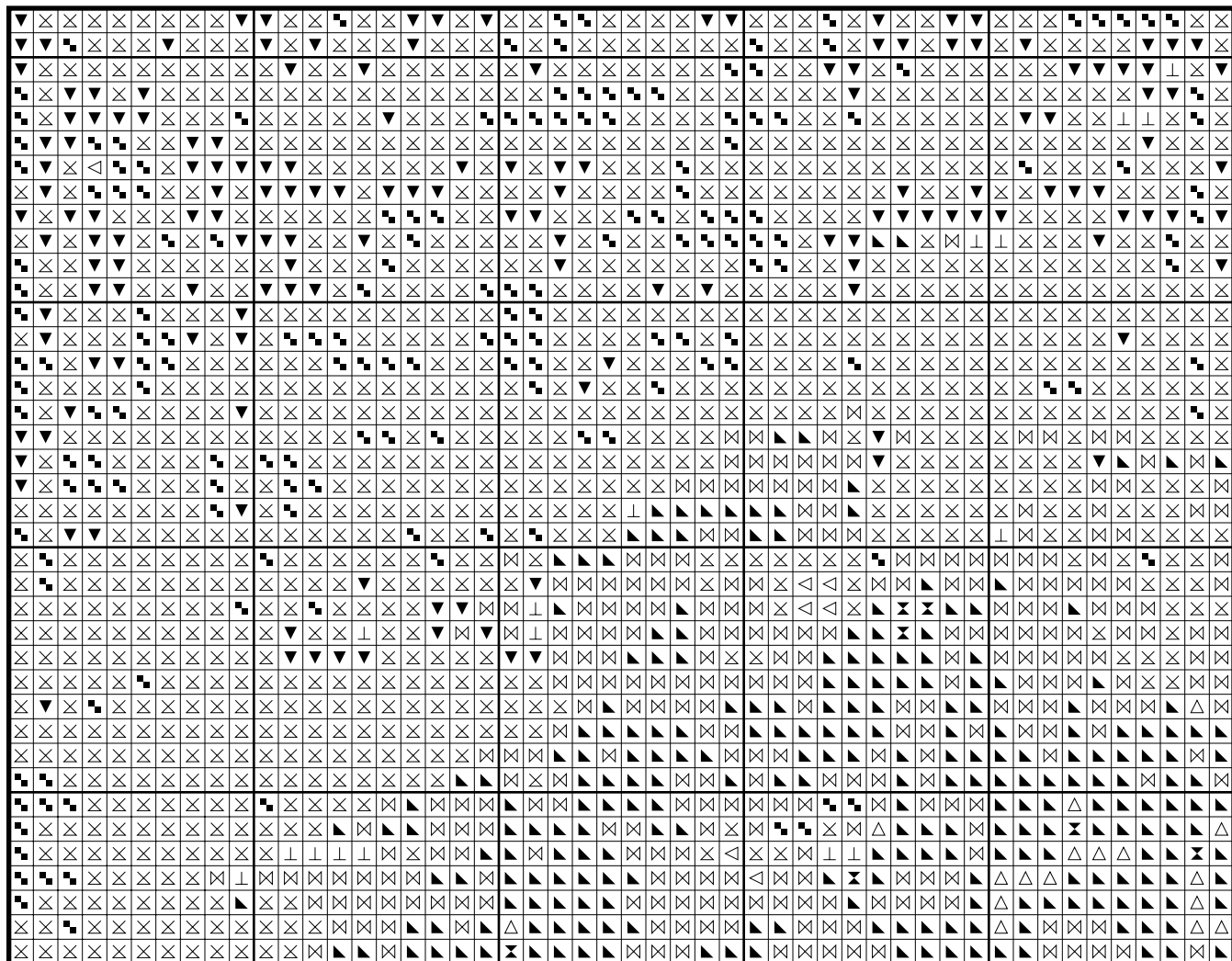
# Romantic Close Up by Sara Moon



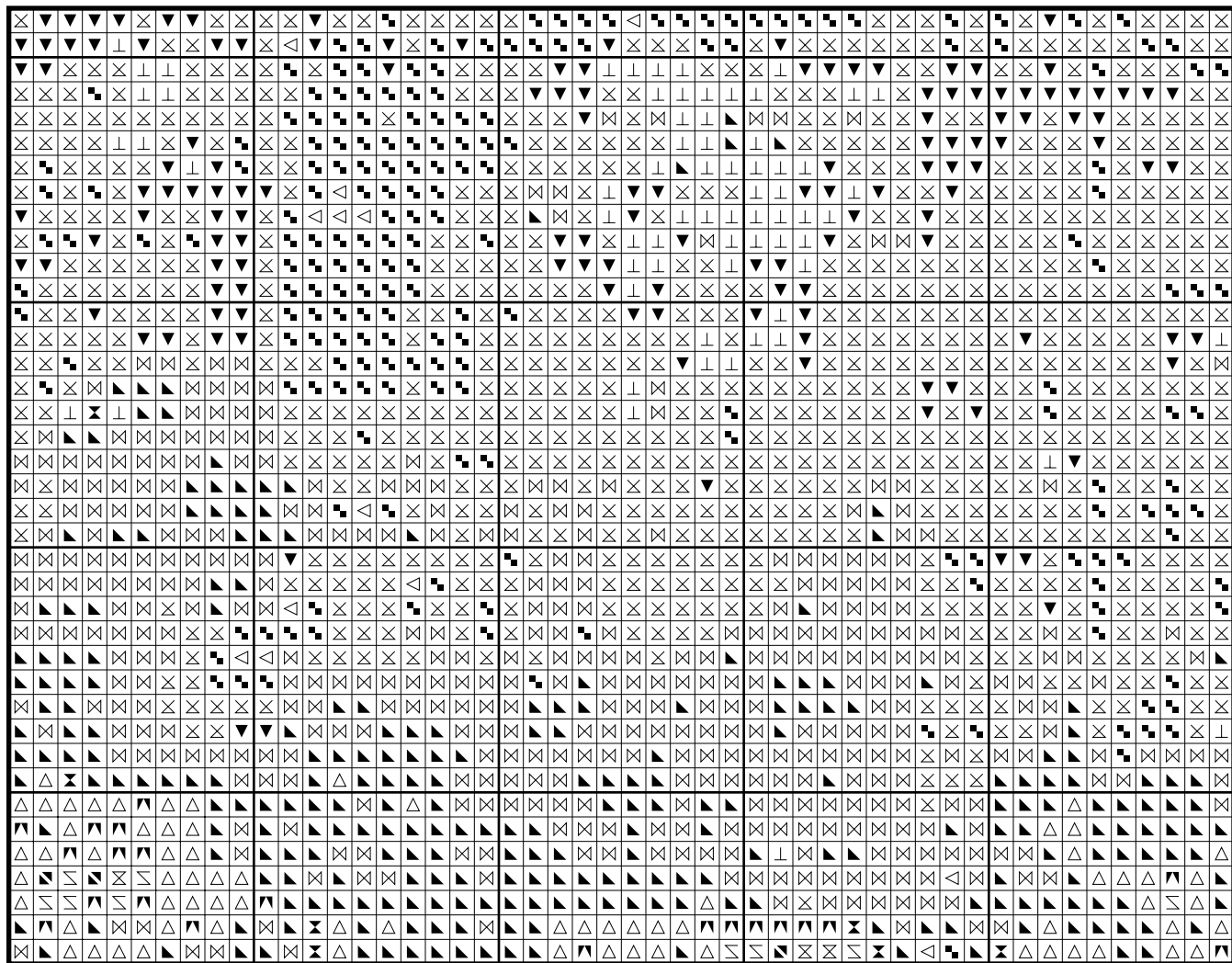




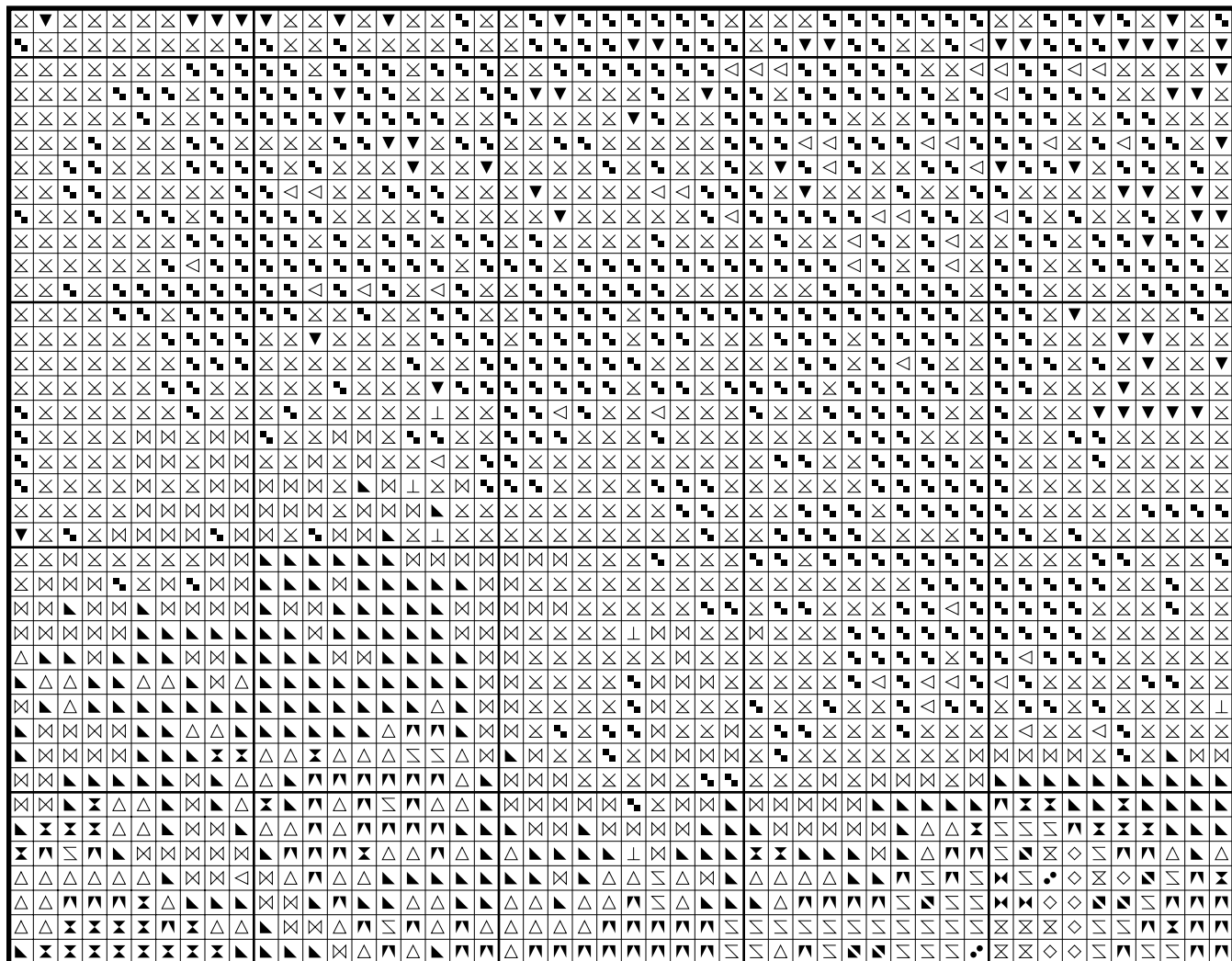
# Romantic Close Up by Sara Moon



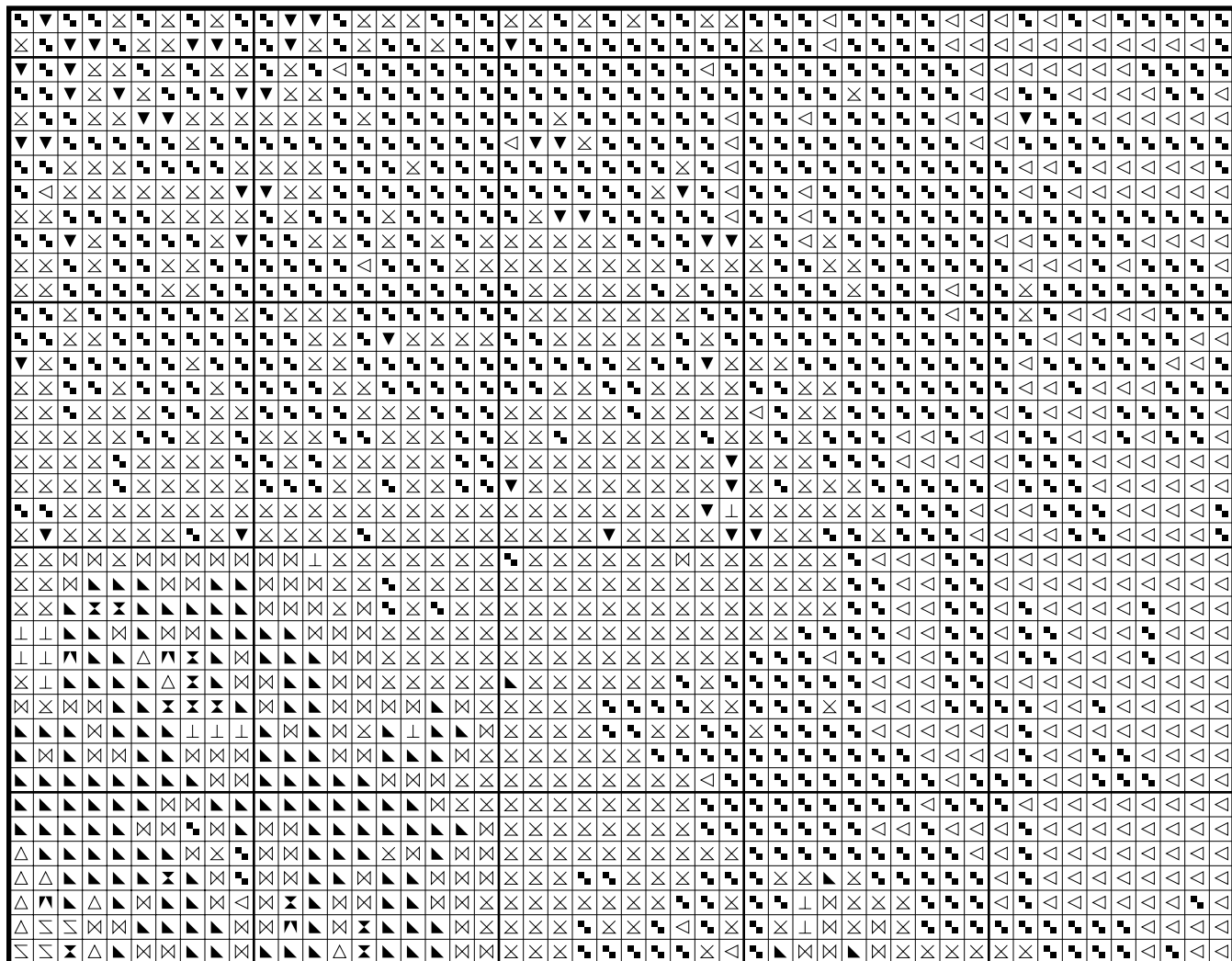
# Romantic Close Up by Sara Moon



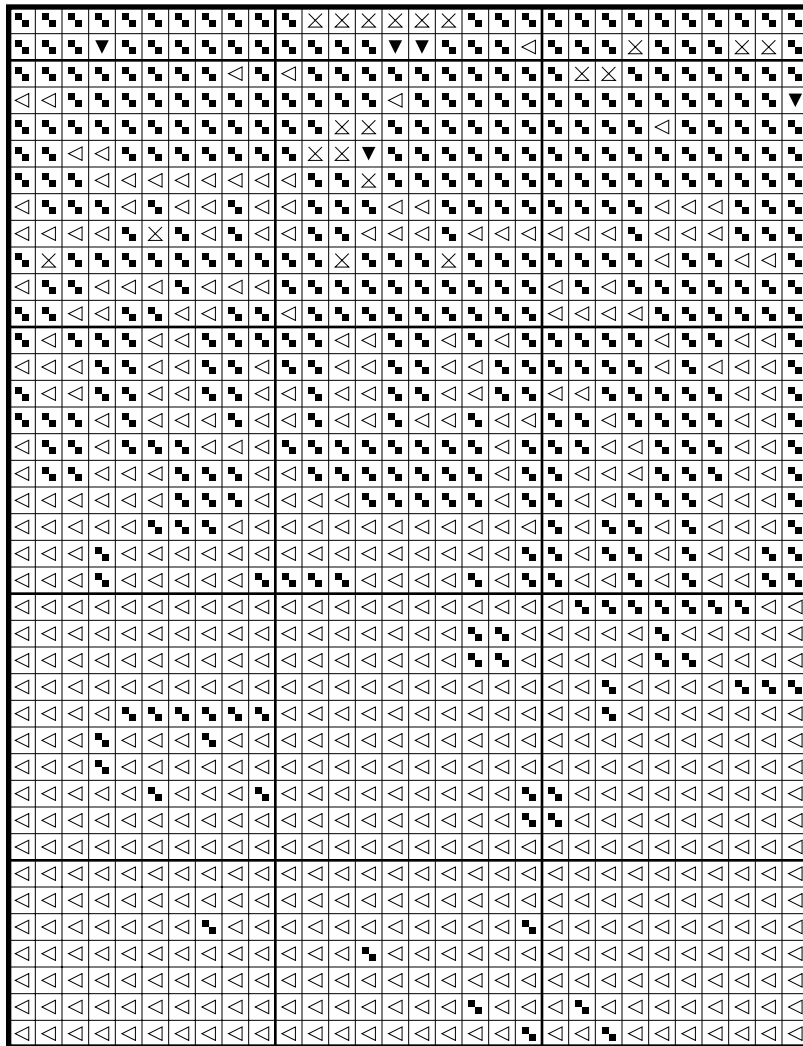
# Romantic Close Up by Sara Moon



# Romantic Close Up by Sara Moon



# Romantic Close Up by Sara Moon



- DMC 310 Black: 335 stitches
- DMC 3371 Black Brown: 176 stitches
- DMC 838 Very Dark Beige Brown: 127 stitches
- DMC 839 Dark Beige Brown: 38 stitches
- DMC 801 Dark Coffee Brown: 67 stitches
- DMC 3781 Dark Mocha Brown: 99 stitches
- DMC 3011 Dark Khaki Green: 54 stitches
- DMC 420 Dark Hazelnut Brown: 236 stitches
- DMC 3862 Dark Mocha Beige: 158 stitches
- DMC 832 Golden Olive: 152 stitches
- DMC 610 Dark Drab Brown: 177 stitches
- DMC 611 Drab Brown: 203 stitches
- DMC 3012 Medium Khaki Green: 232 stitches
- DMC 370 Medium Mustard: 842 stitches
- DMC 371 Mustard: 770 stitches
- DMC 3032 Medium Mocha Brown: 264 stitches
- DMC 3828 Hazelnut Brown: 547 stitches
- DMC 372 Light Mustard: 1194 stitches
- DMC 833 Light Golden Olive: 4517 stitches
- DMC 3046 Medium Yellow Beige: 5070 stitches
- DMC 3782 Light Mocha Brown: 514 stitches
- DMC 3013 Light Khaki Green: 424 stitches
- DMC 842 Very Light Beige Brown: 5357 stitches
- DMC 453 Light Shell Gray: 5251 stitches
- DMC 3033 Very Light Mocha Brown: 17489 stitches
- DMC 3072 Very Light Beaver Gray: 5387 stitches

\* Generally 30 stitches will use 1 metre of DMC floss.

PATTERN LAYOUT				
17	18	19	20	21
12	13	14	15	16
7	8	9	10	11
2	3	4	5	6

