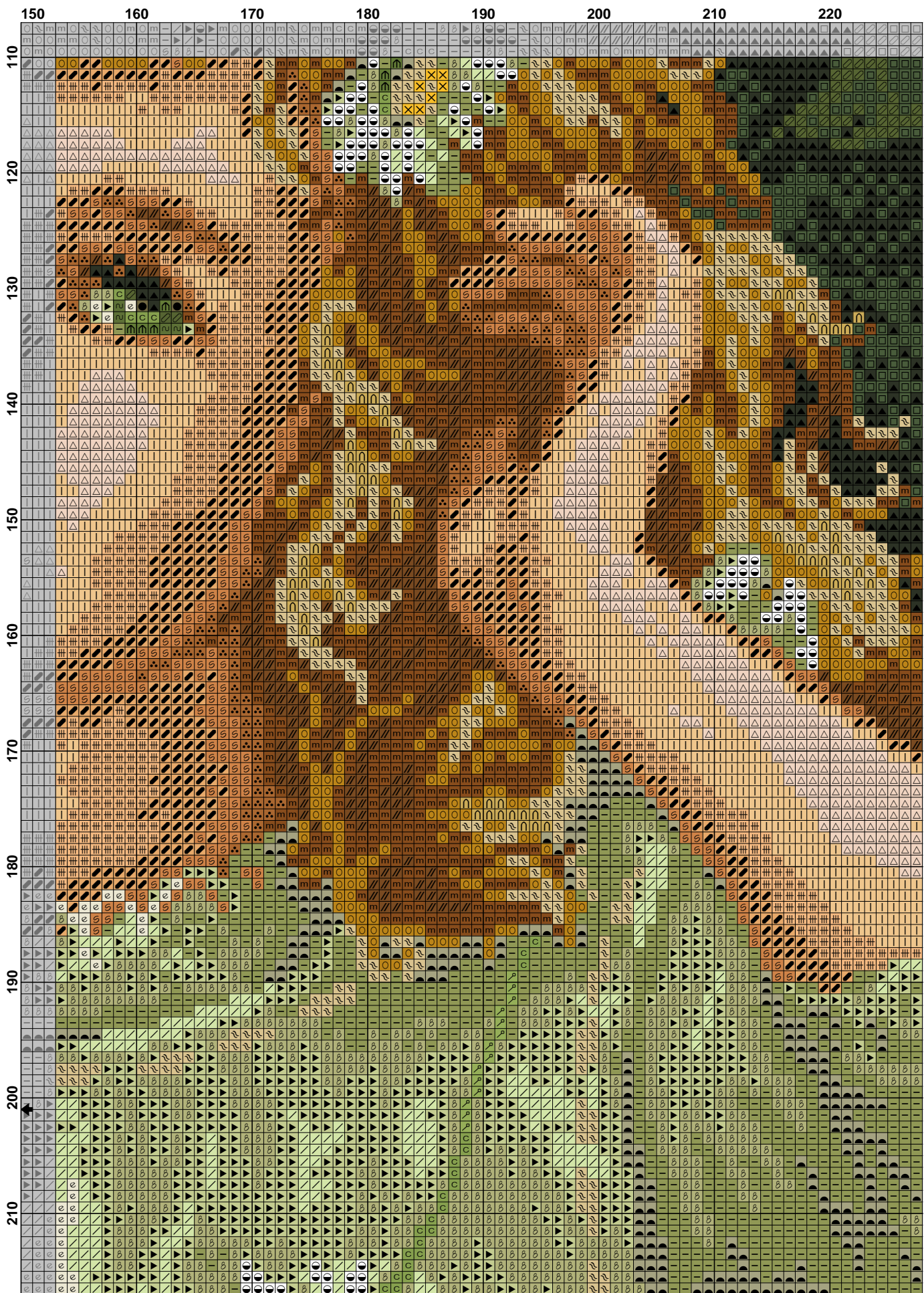






	80	90	100	110	120	130	140	150
110
120
130
140
150
160
170
180
190
200
210





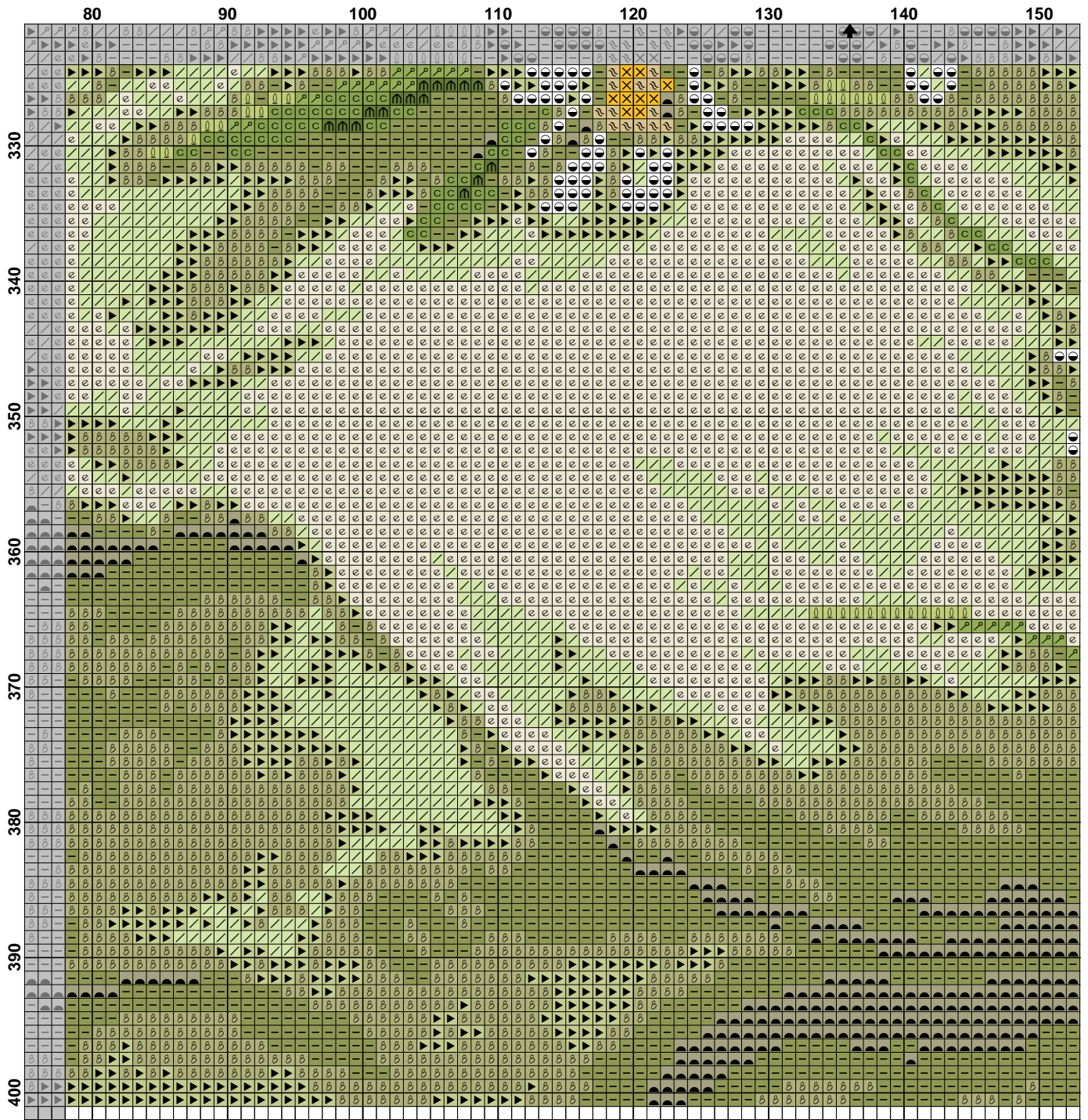
	10	20	30	40	50	60	70
220
230
240
250
260
270
280
290
300
310
320

	80	90	100	110	120	130	140	150
220
230
240
250
260
270
280
290
300
310
320

	150	160	170	180	190	200	210	220
220	eee	eee	eee	eee	eee	eee	eee	eee
230	eee	eee	eee	eee	eee	eee	eee	eee
240	eee	eee	eee	eee	eee	eee	eee	eee
250	eee	eee	eee	eee	eee	eee	eee	eee
260	eee	eee	eee	eee	eee	eee	eee	eee
270	eee	eee	eee	eee	eee	eee	eee	eee
280	eee	eee	eee	eee	eee	eee	eee	eee
290	eee	eee	eee	eee	eee	eee	eee	eee
300	eee	eee	eee	eee	eee	eee	eee	eee
310	eee	eee	eee	eee	eee	eee	eee	eee
320	eee	eee	eee	eee	eee	eee	eee	eee

	230	240	250	260	270
220
230
240
250
260
270
280
290
300
310
320

	10	20	30	40	50	60	70
330
340
350
360
370
380
390
400



	230	240	250	260	270
330
340
350
360
370
380
390
400

Pattern Name: 2.80 Vara margaretelor
Company: Rogoblen
Fabric: Aida 14, White
 270w X 400h Stitches
Size: 14 Count, 48.99w X 72.57h cm

Floss Used for Full Stitches:

Symbol	Strands	Type	Number	Color
	2	DMC	301	Mahogany-MD
	2	DMC	310	Black
	2	DMC	350	Coral-MD
	2	DMC	402	Mahogany-VY LT
	2	DMC	469	Avocado Green
	2	DMC	471	Avocado Green-VY LT
	2	DMC	472	Avocado Green-UL LT
	2	DMC	610	Drab Brown-DK
	2	DMC	642	Beige Gray-DK
	2	DMC	729	Old Gold-MD
	2	DMC	738	Tan-VY LT
	2	DMC	742	Tangerine-LT
	2	DMC	935	Avocado Green-DK
	2	DMC	936	Avocado Green-VY DK
	2	DMC	937	Avocado Green-MD
	2	DMC	3013	Khaki Green-LT
	2	DMC	3770	Tawny-VY LT
	2	DMC	3776	Mahogany-LT
	2	DMC	3825	Pumpkin-Pale
	2	DMC	3856	Mahogany-UL VY LT
	2	DMC	5200	White
	2	Anchor	259	Loden Green VY LT
	2	Anchor	266	Avocado Med LT
	2	Anchor	308	Topaz Med DK
	2	Anchor	308	Topaz Med DK
	2	Anchor	351	Bark Med DK
	2	Anchor	352	Bark DK
	2	Anchor	842	Fern Green LT
	2	Anchor	843	Fern Green
	1	DMC	948	Peach-VY LT
	1	DMC	967	Apricot-VY LT
	1	DMC	350	Coral-MD
	1	DMC	3830	Terra Cotta-MD

