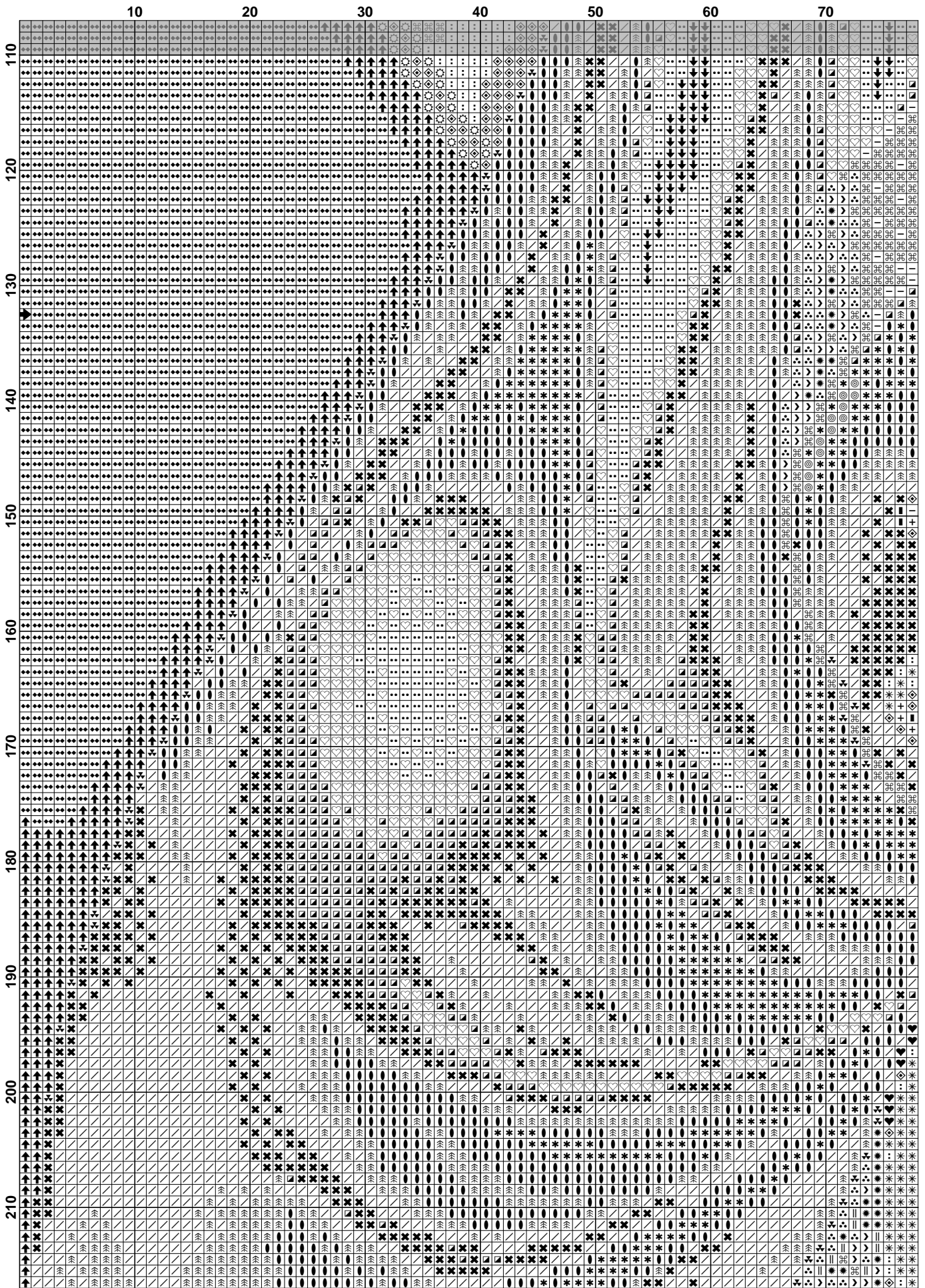
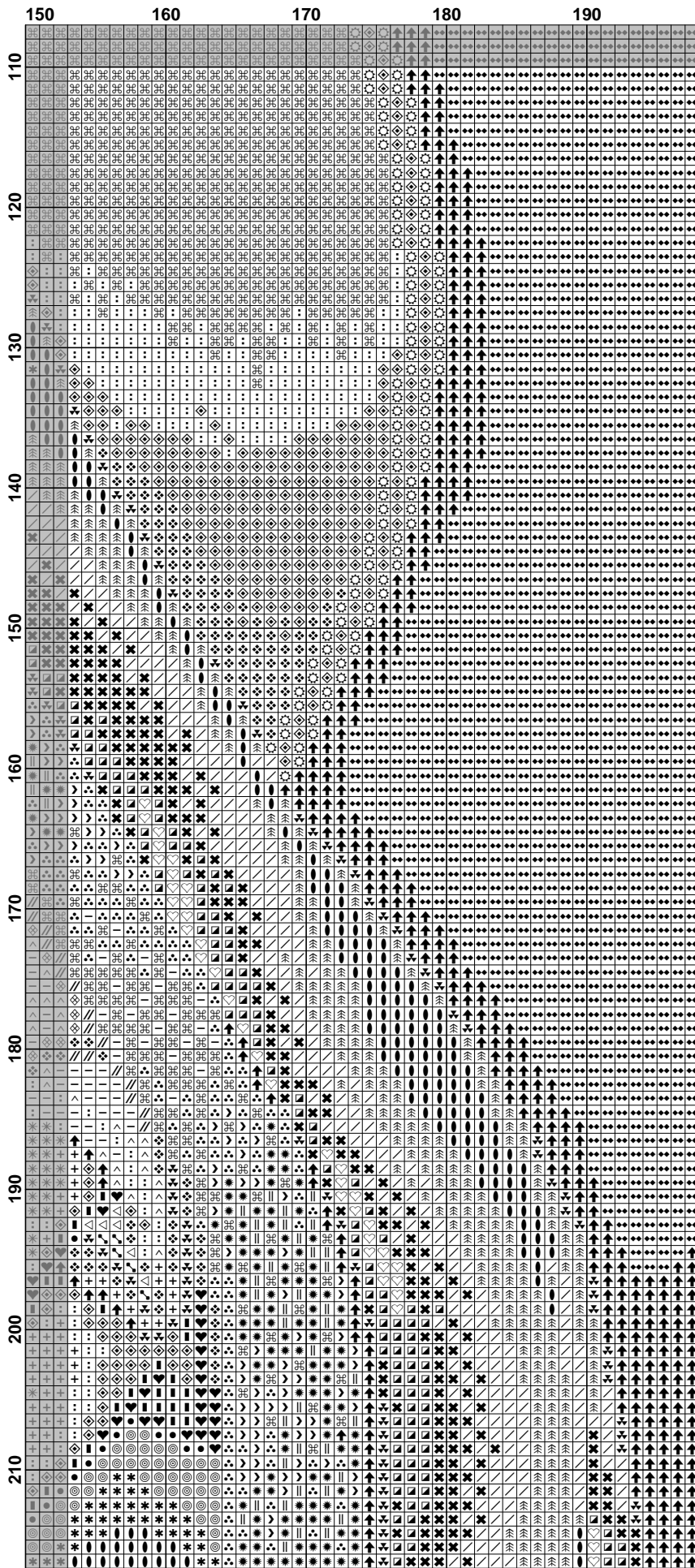
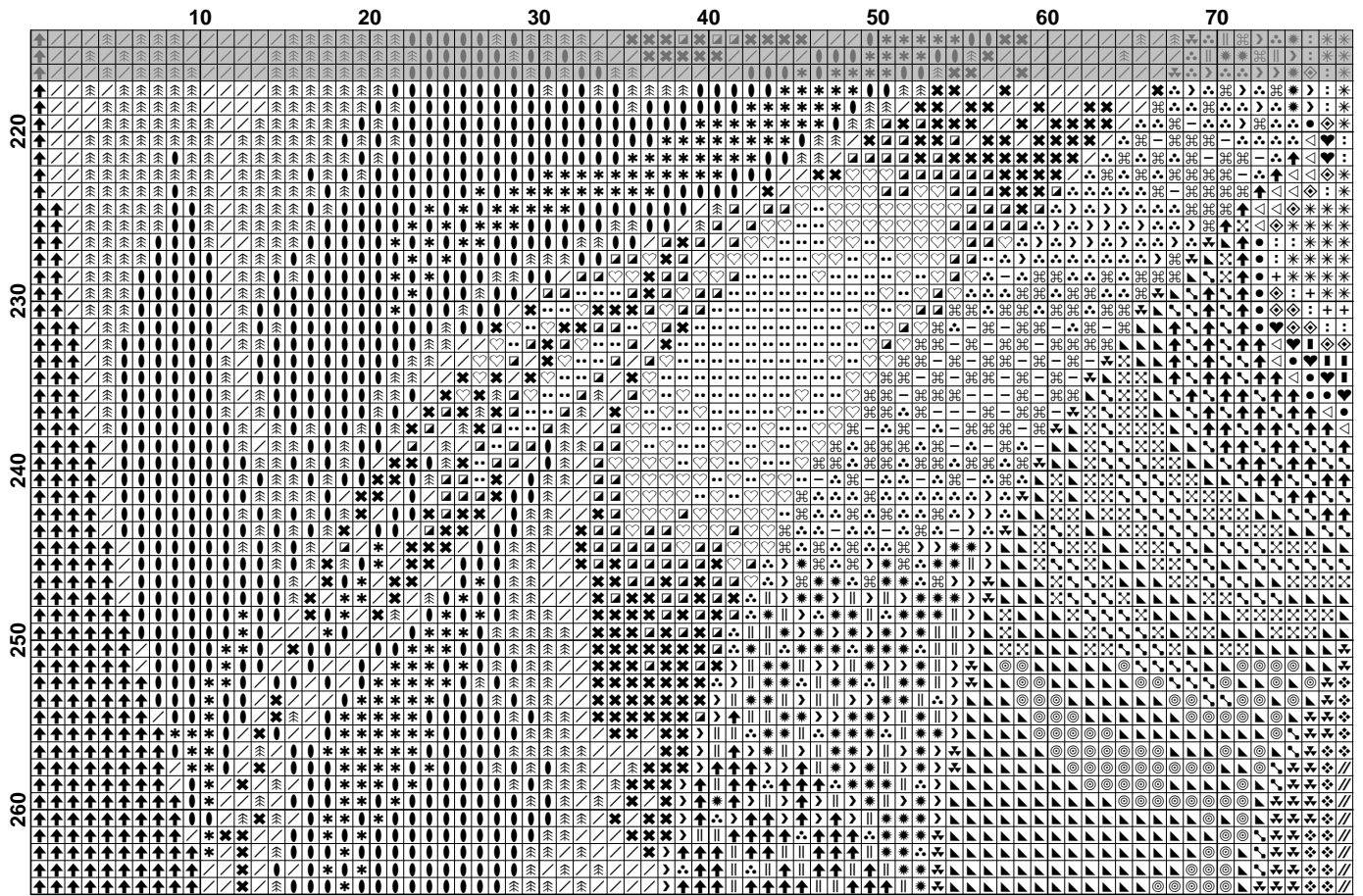


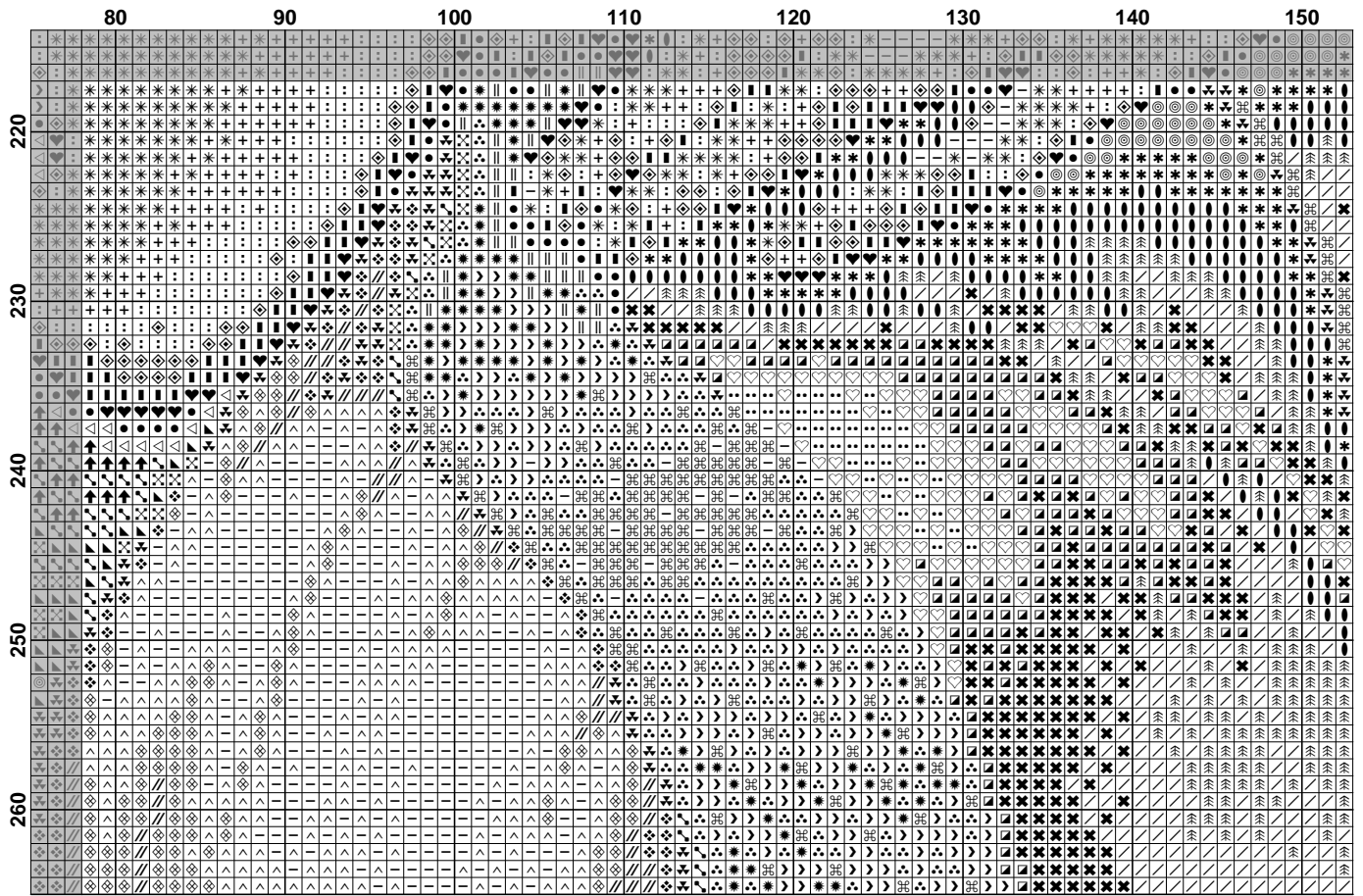
	150	160	170	180	190
10
20
30
40
50
60
70
80
90
100
110

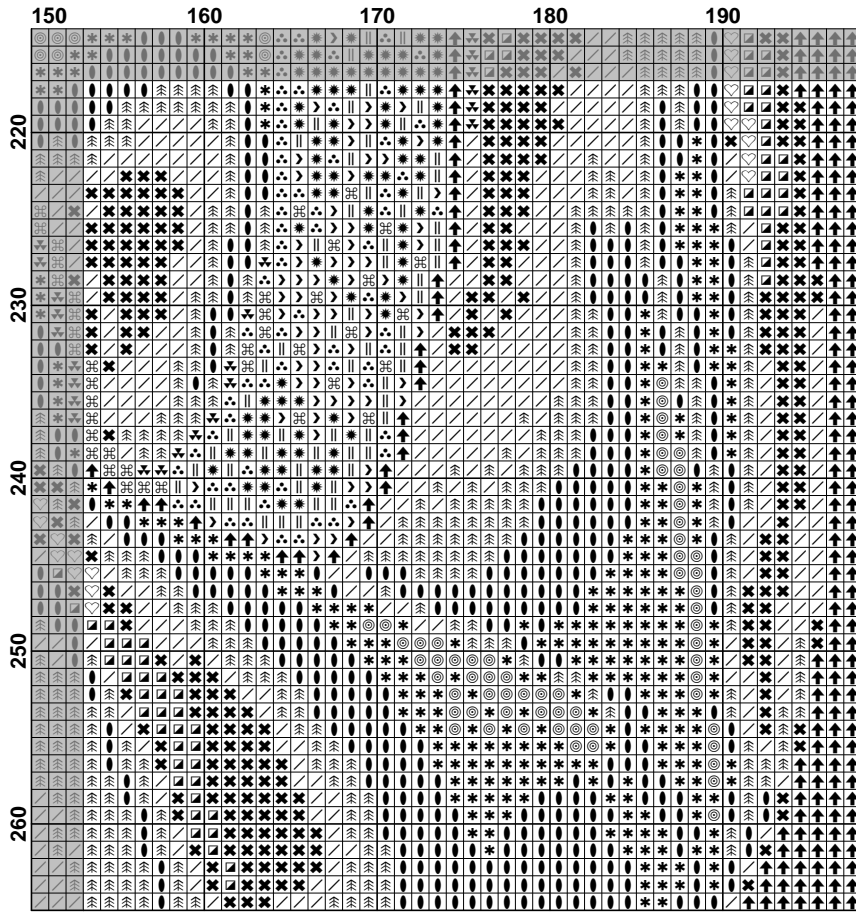












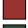















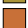
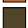

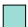
















Pattern Name: BLAGOST
Company: VISHIVANKA129
Copyright: solovei
Fabric: Aida 14, White
 198w X 265h Stitches
Size(s): 14 Count, 35.92w X 48.08h cm
 22 Count, 22.86w X 30.60h cm
 18 Count, 27.94w X 37.39h cm
 14 Count, 35.92w X 48.08h cm

Floss Used for Full Stitches:

Symbol	Strands	Type	Number	Color
	2	DMC	301	Mahogany-MD
 X	2	DMC	319	Pistachio Green-VY DK
 ♥	2	DMC	434	Brown-LT
	2	DMC	435	Brown-VY LT
 ◇	2	DMC	436	Tan
 :	2	DMC	437	Tan-LT
 ☼	2	DMC	498	Christmas Red-DK
 ▲	2	DMC	500	Blue Green-VY DK
 ≡	2	DMC	517	Wedgewood-DK
 X	2	DMC	518	Wedgewood-LT
 ↘	2	DMC	520	Fern Green-DK
 //	2	DMC	524	Fern Green-VY LT
 ▣	2	DMC	597	Turquoise
 ⚔	2	DMC	611	Drab Brown
 ❖	2	DMC	612	Drab Brown-LT
 ◇	2	DMC	613	Drab Brown-VY LT
 -	2	DMC	712	Cream
 +	2	DMC	738	Tan-VY LT
 *	2	DMC	739	Tan-UL VY LT
 ↓	2	DMC	747	Peacock Blue-VY LT
 ●	2	DMC	801	Coffee Brown-DK
 ◎	2	DMC	823	Navy Blue-DK
 ❖	2	DMC	832	Golden Olive
 *	2	DMC	921	Copper
 ◁	2	DMC	938	Coffee Brown-UL DK
)	2	DMC	945	Tawny
 ∴	2	DMC	964	Sea Green-LT
 ∴	2	DMC	977	Golden Brown-LT
 ^	2	DMC	3033	Mocha Brown-VY LT
 /	2	DMC	3760	Wedgewood-MD
 ♥	2	DMC	3766	Peacock Blue-LT
 >	2	DMC	3776	Mahogany-LT
 ⌘	2	DMC	3822	Straw-LT
 ↑	2	DMC	3829	Old Gold-VY DK
 ●	2	DMC	3842	Wedgewood-DK
 *	2	DMC	3885	Medium Very Dark Blue